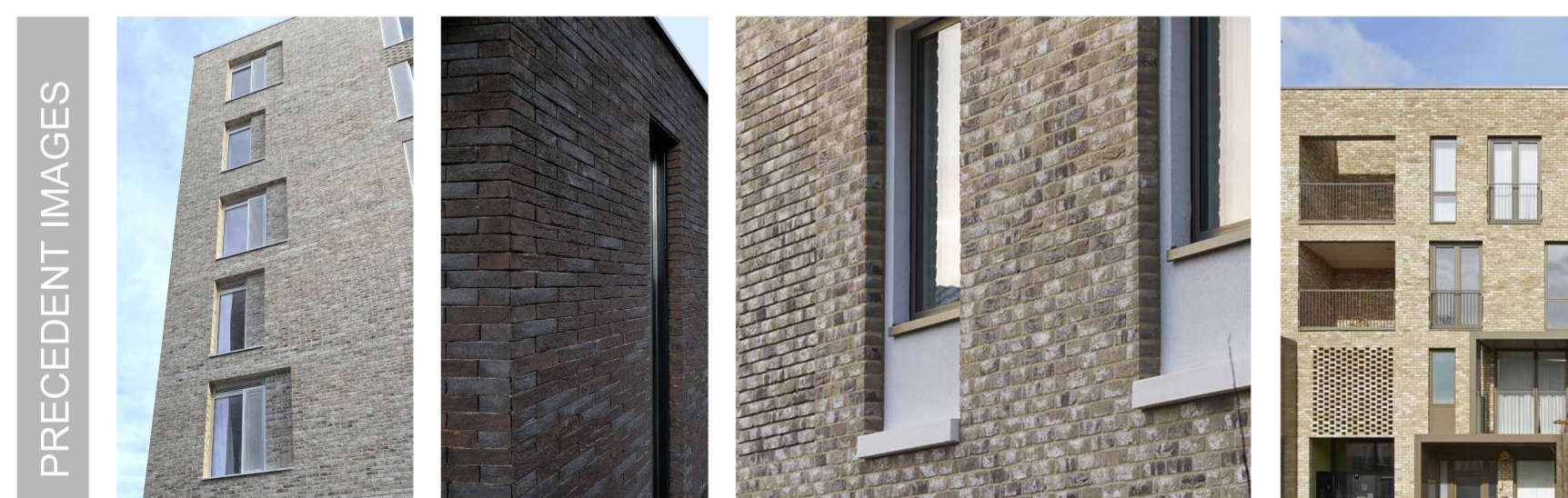
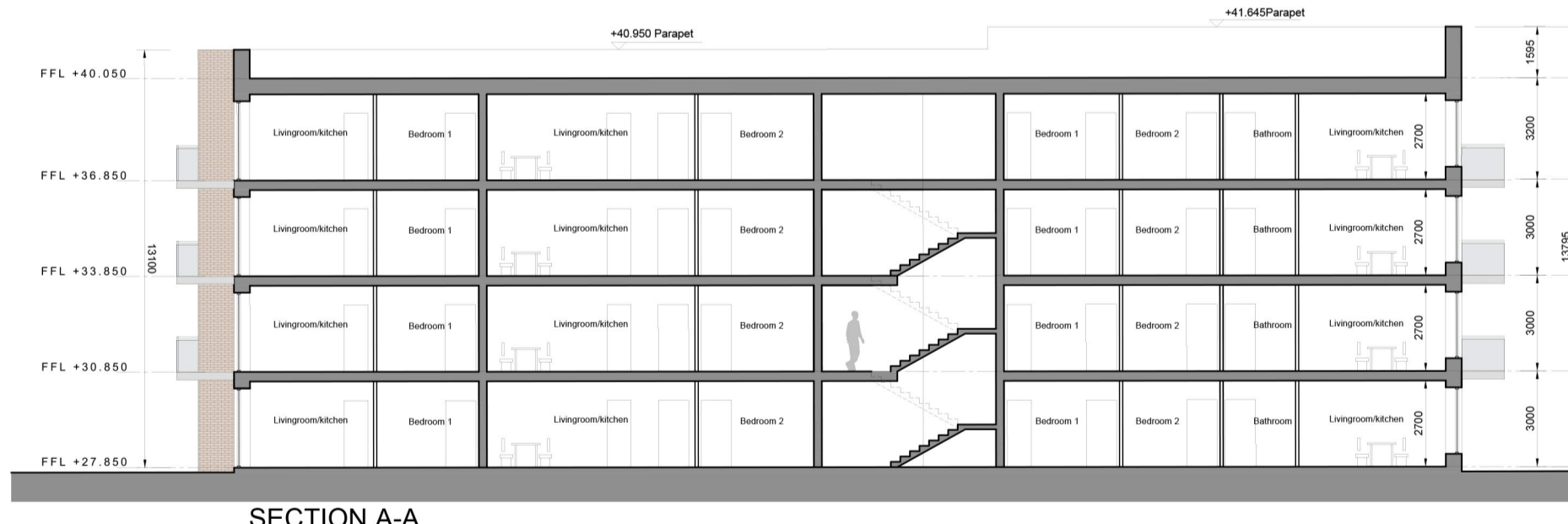
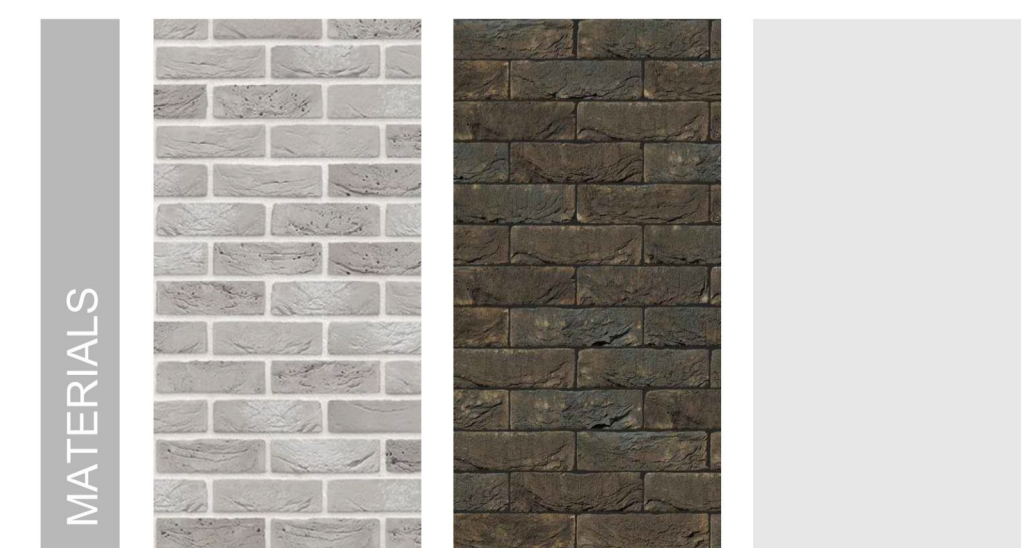


Vauderville Court, London
Levitt Bernstein



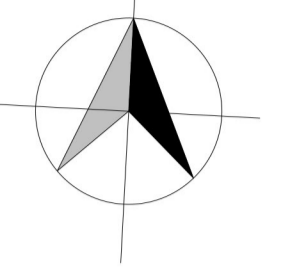
LIGHT GREY BRICK WITH RECESSES
'LIVORNO' BRICK
RECESSED PANELS WITH RENDER
BUILDING SCALE



LIGHT GREY BRICK
DARK BROWN BRICK ('LIVORNO' or similar approved)
SMOOTH RENDER

- © This drawing is copyright.
- 1 Do not scale this drawing.
- 2 Errors and omissions to be immediately notified to Architect.
- 3 All dimensions to be checked on site.
- 4 To be read with relevant Engineers drawings.

NORTH



Breakdown of Units		
Apartment type	No.	% by beds
1 bed/ studio	0	0.00%
1 bed	8	34.8%
2 bed/ 3person	0	0.00%
2 bed/ 4 person	15	65.2%
3 bed/ 5 person	0	0.00%
Total	23	100.0%

Dual Aspect Ratio:	87.00%
Gross Internal Floor Area:	2208m ²
Net Commercial Area:	0m ²

Notes:

All dimensions in millimetres

External Finishes:

Roof:
Selected flat roof with parapets to walls.
Sedum finish.

Walls:
Selected facing brick, seamed metal to front entrance surround, power coated aluminium or similar louvres to bin/bike stores

Windows:
powder coated aluminium/Upvc or similar with louvres or panels where shown

Gutters/downpipes:
Internal outlets

Balconies:
Powder coated steel & glass or similar

Doors:
Powder coated aluminium or similar door, with fanlight and/or sidelight

revisions

description

Block B

FLOOR PLANS,
SECTION
& ELEVATIONS

job
SHD DEVELOPMENT,
BELCAMP,
MALAHIDE ROAD,
DUBLIN 17.

client
Gerard Gannon Properties

issue
SHD PLANNING APPLICATION

CONROY CROWE KELLY
ARCHITECTS & URBAN DESIGNERS

65 MERRION SQUARE
DUBLIN 2

phone 01 6613990 fax 01 6765715
email info@ckk.ie

drawing no.
2008 PA1 B 01

rev.

scale
1:200 A1
date
APRIL 22
drawn
AOL
checked
COS